



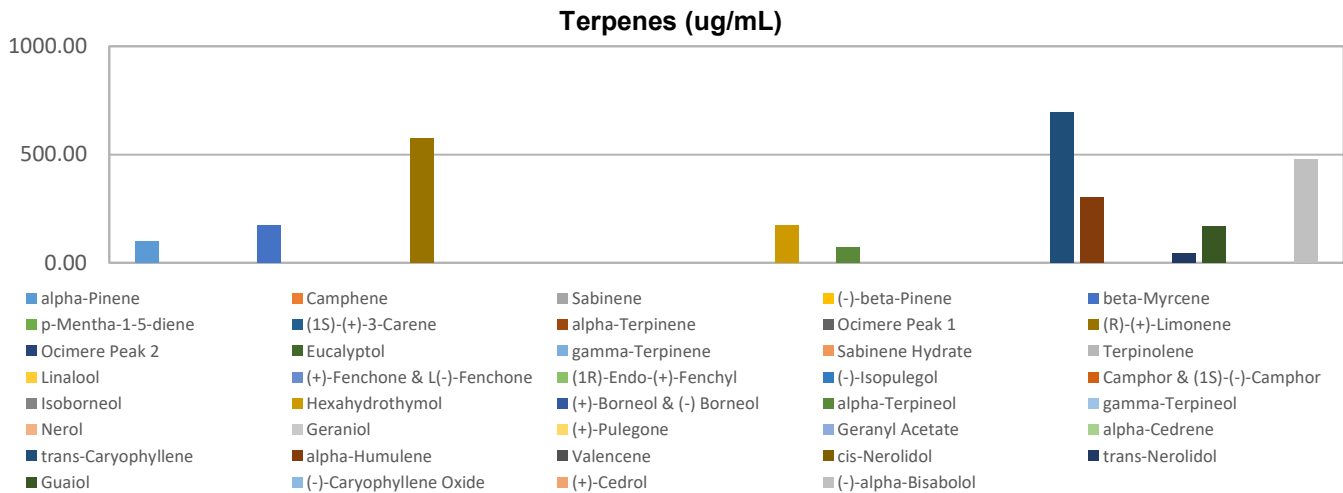
Terpenes Profile

Customer: Fountain of Health
Customer Sample ID: Mint Choc. 1000mg
Laboratory Number: 201903-0731
Extraction Technician: MTO
Analytical Chemist: GB
Density (g/mL): 0.967

Extraction Date(s):	Analysis Date(s)
3/13/2019	3/13/2019

Terpene	Results ug/mL	Terpene	Results ug/mL
alpha-Pinene	99.34	Isoborneol	
Camphene		Hexahydrothymol	173.75
Sabinene		(+)-Borneol & (-) Borneol	
(-)-beta-Pinene		alpha-Terpineol	70.69
beta-Myrcene	171.89	gamma-Terpineol	
p-Mentha-1-5-diene		Nerol	
(1S)-(+)-3-Carene		Geraniol	
alpha-Terpinene		(+)-Pulegone	
Ocimere Peak 1		Geranyl Acetate	
(R)-(+)-Limonene	572.61	alpha-Cedrene	
Ocimere Peak 2		trans-Caryophyllene	695.39
Eucalyptol		alpha-Humulene	302.86
gamma-Terpinene		Valencene	
Sabinene Hydrate		cis-Nerolidol	
Terpinolene		trans-Nerolidol	42.42
Linalool		Guaiol	167.80
(+)-Fenchone & L(-)-Fenchone		(-)-Caryophyllene Oxide	
(1R)-Endo-(+)-Fenchyl		(+)-Cedrol	
(-)-Isopulegol		(-)-alpha-Bisabolol	477.73
Camphor & (1S)-(-)-Camphor			

Empty result indicates data is less than detection limit. Reporting Limit is roughly 100 ug/g depending on amount extracted.



Altitude Consulting, LLC utilizes NIST traceable Reference Standards and Certified Reference Material to calibrate analytical instruments along with proven analytical methods. The methods are applied in the most ethical manner following good laboratory practice guidelines. The results of this report are based solely on the sample submitted and cannot be reproduced.



This report expires 30 days after analysis date.

Terpenes Profile